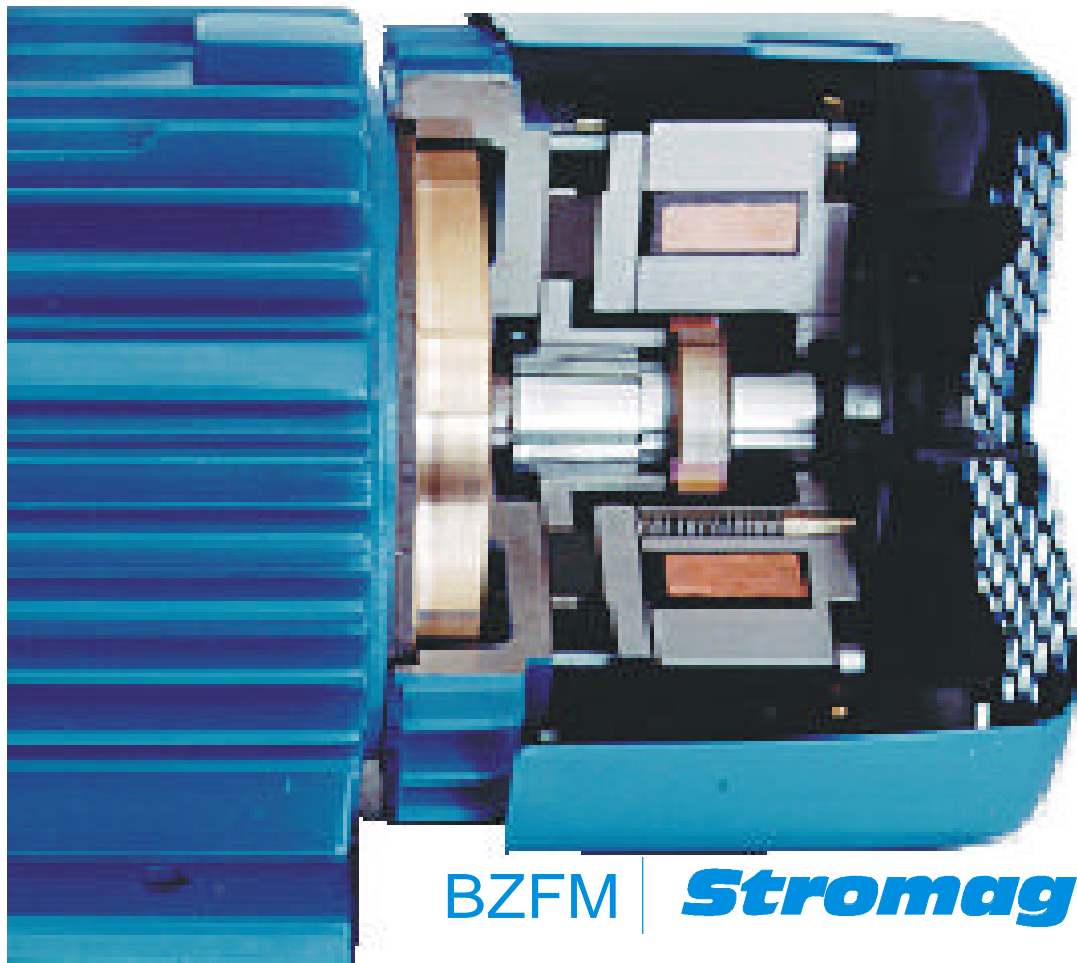


Dutchi Motors®



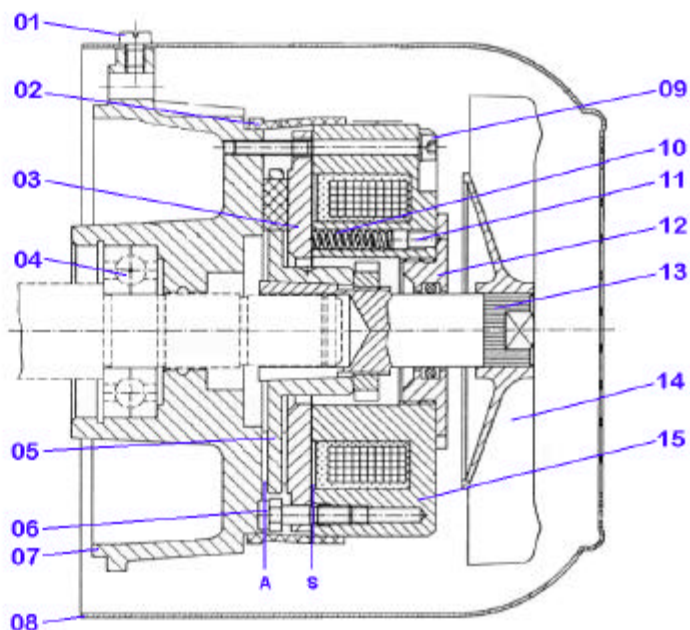
Web site : www.dutchi.com / E-mail : dutchi.motors@dutchi.nl



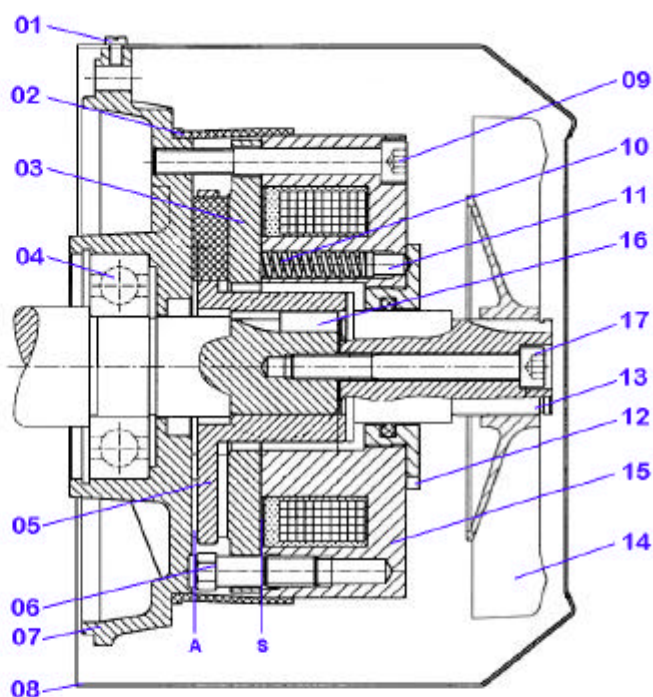
Brake motors series DM1B

Power is our commodity,
the world is our market !

Brake for DM1B 80 - 112



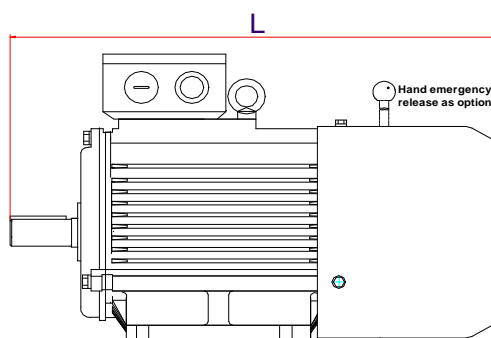
Brake for DM1B 132



Parts discription

- 1 Bolt for mounting fancover to motor
- 2 Collar
- 3 Armature disc
- 4 Motor NDE Bearing
- 5 Carrier with fiction lining
- 6 Adjustment screw
- 7 Motor NDE shield
- 8 Fancover
- 9 Fiction bolt
- 10 Spring
- 11 Spring torque adjusting bolts
- 12 Nut for torque adjustment
- 13 Motor NDE shaft
- 14 Fan
- 15 Coil body
- 16 Motor NDE shaft key
- 17 DM1B 132 : Bolt M10 x 90mm (50Nm)

Length motor with brake



Motor size	Brake type	M _N Nm	M _N dyn. Nm	t ₁ ms	t ₅ 1) ms	t ₅ 2) ms	P _{VN} S4-40% ED kW	A 0 -0,3	J kgcm ²	S airgap min/max	Lock* minimal Nm	L	Weight (brake) Kg
DM1B 80	BZFM 1,6 - V13-02	13,5	12,5	85	30	170	0,020	1,5	2,0	0,3/0,5	50	350	5,2
DM1B 90	BZFM 2,5 - V13-02	27	24,5	125	35	210	0,028	1,8	3,0	0,3/0,5	80	383 408	7,4
DM1B 100	BZFM 4,0 - V13-02	37	33,6	150	40	230	0,033	1,8	4,6	0,3/0,6	120	441	9,6
DM1B 112	BZFM 6,3 - V13-02	65	59,0	190	50	260	0,046	1,8	7,0	0,4/0,7	150	467	12,4
DM1B 132	BZFM 10 - V13-02	125	113	310	60	280	0,090	-	25	0,4/0,7	-	552 590	16,9

1) switch at DC side, 2) switch at AC side

*Lock : minimal pull torque for groove bolt

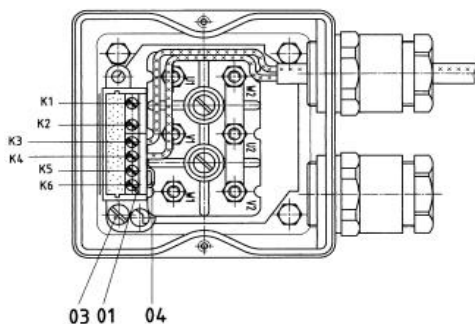
Electrical data

Voltage DC			U _N = 24 V			U _N = 95 V			U _N = 103 V			U _N = 140 V		
Motor size	Brake type		R _K	I _k	P _K	R _K	I _k	P _K	R _K	I _k	P _K	R _K	I _k	P _K
			Ω	A	W	Ω	A	W	Ω	A	W	Ω	A	W
DM1B 80	BZFM 1,6 - V13-02		18,2	1,32	32,0	266	0,36	34	415	0,25	26	505	0,3	34
DM1B 90	BZFM 2,5 - V13-02		14,0	1,70	40,0	190	0,50	48	294	0,35	36	451	0,3	44
DM1B 100	BZFM 4,0 - V13-02		12,0	2,00	48,0	164	0,58	55	259	0,40	41	320	0,4	61
DM1B 112	BZFM 6,3 - V13-02		8,9	2,70	65,0	128	0,74	70	198	0,52	54	251	0,6	78
DM1B 132	BZFM 10 - V13-02		7,0	3,44	83,0	100	0,95	90	124	0,83	86	200	0,7	98

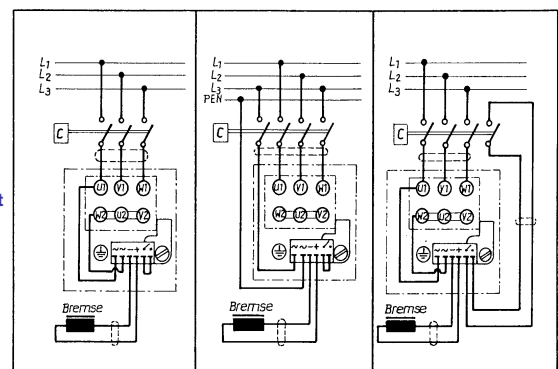
Voltage DC			U _N = 190 V			U _N = 207 V			U _N = 240 V			U _N = ... V		
Motor size	Brake type		R _K	I _k	P _K	R _K	I _k	P _K	R _K	I _k	P _K	R _K	I _k	P _K
			Ω	A	W	Ω	A	W	Ω	A	W	Ω	A	W
DM1B 80	BZFM 1,6 - V13-02		967	0,20	37	1237	0,17	35	1609	0,15	36			
DM1B 90	BZFM 2,5 - V13-02		839	0,23	43	1044	0,20	41	1297	0,19	44			
DM1B 100	BZFM 4,0 - V13-02		615	0,31	59	762	0,27	56	957	0,25	60			
DM1B 112	BZFM 6,3 - V13-02		489	0,39	74	612	0,34	70	766	0,31	75			
DM1B 132	BZFM 10 - V13-02		391	0,49	92	472	0,44	91	616	0,39	94			

Motor voltage	Voltage tolerance	brake voltage (DC)	rectifier	max. rectifier voltage	max. rectifier current	frequency
3~ AC						
230	220 - 250	207	BG270	270 V AC	1,8 A	50 Hz (60 Hz)
400	380 - 420	190	EG500	500 V AC	1,8 A	50 Hz (60 Hz)
255	250 - 265	240	BG270	270 V AC	1,8 A	50 Hz (60 Hz)
440	440 - 460	207	EG500	500 V AC	1,8 A	50 Hz (60 Hz)
480		240	EG500	500 V AC	1,8 A	50 Hz (60 Hz)
290	280 - 310	140	EG500	500 V AC	1,8 A	50 Hz (60 Hz)
500	500 - 535	240	EG500	500 V AC	1,8 A	50 Hz (60 Hz)
1~ 230 AC (separate supply)		207	BG270	270 V AC	1,8 A	50Hz (60Hz)
24 DC (separate supply)		24	-	-	-	-

Terminal box



- 01: Terminal block (rectifier)
- 03: Mounting crew
- 04: Contact crew
- K1, K2: (~ : ~) AC voltage in
- K3, K4: (- : +) DC voltage out
- K5, K6: (- / -)



Dutchi Motors B.V.

Telephone : +31 (0) 26 - 3541 600
 Telefax : +31 (0) 26 - 3541 650
 E-mail : dutchi.motors@dutchi.nl
 Internet : www.dutchi.com

P.O. Box 5390
 NL - 6802 EJ ARNHEM

**Power is our commodity,
 the world is our market !**

